



MATATIELE
LOCAL MUNICIPALITY

MATATIELE LOCAL MUNICIPALITY

Research and analysis of ward profiling: Ward based plans

WARD 06

May 2018

TSHANI
CONSULTING C.C.

Table of Contents

1. Executive Summary.....4

2. Methodology4

3. Ward Overview.....5

4. Socio Economic Analysis5

5. Built Environment Assessment..... 11

6. Current Projects 13

7. Ward Needs and Priorities 13

8. Stakeholders within Ward 14

9. Key Social Challenges..... 14

List of Tables

Table 1: SWOT Analysis – Community Based Planning Program 2017 (Data Collection).....	5
Table 2: Major Event within the Ward – Community Based Planning Program 2017 (Data Collection)	5
Table 3: Programmes within the Ward – Community Based Planning Program 2017 (Data Collection)	5
Table 4: Population Size and Distribution within the Ward – Community Based Planning Program 2017 (Data Collection).....	6
Table 5: Social Grant Dependency within Ward - Community Based Planning Program 2017 (Data Collection).....	7
Table 6: Indigent support within ward– Community Based Planning Program 2017 (Data Collection)	7
Table 7: Child and Female Headed Households within the Ward - Census 2011	7
Table 8: Education Facilities within Ward - Community Based Planning Program 2017 (Data Collection) ..	8
Table 9: Churches and Religious Organisations within the Ward - Community Based Planning Program 2017 (Data Collection).....	8
Table 10: Community Halls - Community Based Planning Program 2017 (Data Collection)	9
Table 11: Economic Activity - Community Based Planning Program 2017 (Data Collection).....	10
Table 12: Agricultural Activities – Community Based Planning Program 2017 (Data Collection).....	10
Table 13: Products produced within the Ward	10
Table 14: Existing Skills within the Ward: Community Based Planning Program 2017 (Data Collection) ..	11
Table 15: Household Access to Water: Community Based Planning Program 2017 (Data Collection)	11
Table 16: Household Access to Sanitation: Community Based Planning Program 2017 (Data Collection)	12
Table 17: Main source of Energy- Community Based Planning Program 2017 (Data Collection).....	12
Table 18: Roads and Bridges within the Ward.....	12
Table 19: Current Projects – Community Based Planning Program 2017 (Data Collection).....	13
Table 20: Ward Needs – Community Based Planning Program 2017 (Data Collection)	13
Table 21: Ward Priorities – Community Based Planning Program 2017 (Data Collection)	13
Table 22: Stakeholders engaged during community engagement sessions – Community Based Planning Program 2017 (Data Collection).....	14
Table 23: Key Social Challenges – Community Based Planning Program 2017 (Data Collection)	14

List of Figures

Figure 1: Gender Distribution – Census 2011	6
Figure 2: Age within Ward Distribution – Census 2011	6
Figure 3: Language Proficiency within Ward – Census 2011.....	7
Figure 4: Gender of Household Head - Census 2011	7
Figure 5: Types of Dwelling within Ward – Census 2011	8
Figure 6: Individual Monthly Income - Census 2011	10
Figure 7: Access to Solid Waste Removal - Census 2011	11
Figure 8 Source of Water supply within the Ward - Community Based Planning Program 2017 (Data Collection).....	11

List of Plans

Plan 1: Ward 06 Locality	4
Plan 2: Education Facilities.....	8
Plan 3: Health Care Facilities.....	9
Plan 4: Other Social Facilities.....	9
Plan 5: Households with electricity.....	12
Plan 6: Roads and Bridges within the Ward - MLM GIS	13
Plan 7: Ward Priorities	15

The following sections have been identified and populated as part of the analysis for Ward 06. The headings which have been covered are seen as critical topics for the ward analysis. When broken down one can properly understand and interpret the spatial economic status quo and development trajectory of the Ward.

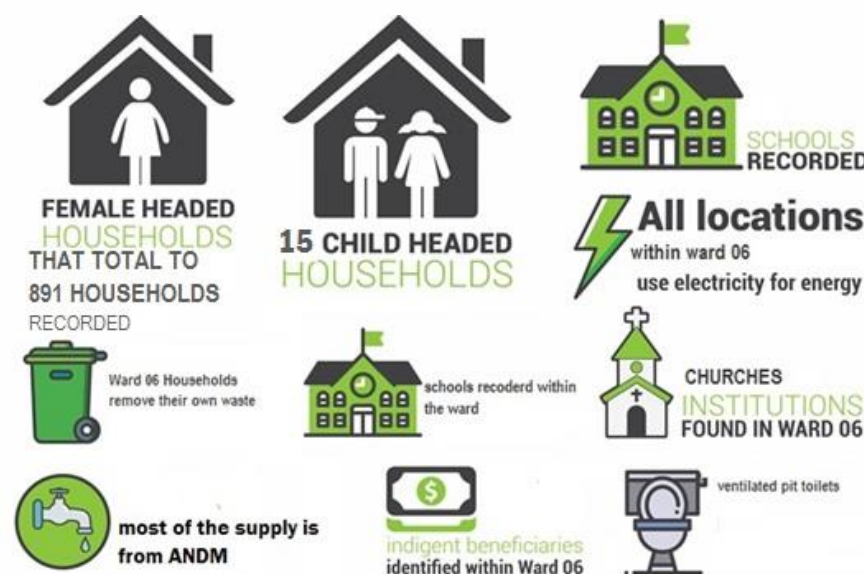
1. Executive Summary

Ward 06 comprises of Bhakaneni, Botsola, Polokong, Protea, Dengwane, Taung, Mahangwe, Matsetseng/Nobhaca and Zwelitsha villages. There is total population of 7 398 recorded from census 2011 and 2677 households from community survey. The gender split within ward 06 is made up of 52% female and 48% males.

It is evident that the most spoken language in Ward 06 is isiXhosa, followed by Sesotho and English. The average household size within ward 06 is 4 people per household. Agricultural activities such as fruits, vegetables and grains are found within the ward to sell beyond the ward and they present opportunities for business and income generation within the ward and the ward closely situated to town making services easily accessible. This ward shows a significant number of educational facilities, these ranging from pre-school to secondary school level.

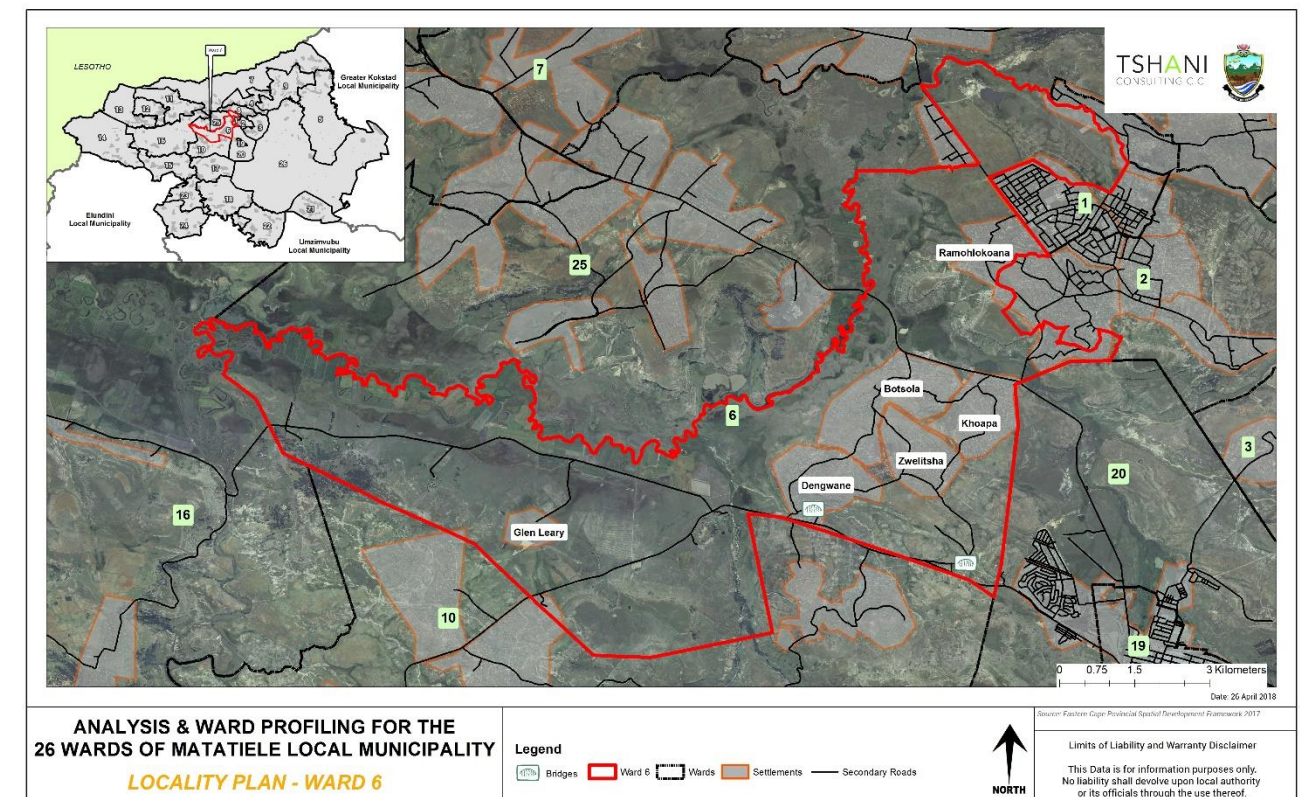
The health care facility located in the neighbouring wards which is Ward 01 and Ward 19 which mainly provides basic primary health services such as family planning, basic check-ups and immunization among others.

In terms of water and sanitation, the District Municipality (ANDM) currently provides water and sanitation to Matatiele Local Municipality area. There is a large backlog with regards the provision of water and sanitation. This ward shows to have access to water services which is provided by the district municipality where most locations of the ward have access to water through communal taps. This ward is one of the wards that are electrified all villages within Ward 06 use electricity as the main source of energy.



1.1. Locality

Ward 06 is situated in the heart of the MLM. The Ward is surrounded by wards 1, 2, 20, 11 and 25. As depicted in the plan below, the main villages within Ward 06 are Dengwane, Matsetseng, Mahangwe, Zwelitsha, Taung, Polokong, Botsola, Bhakaneni, Ramatli and Protea. It is to be noted that all villages which have been listed were identified through the community outreach programmes. The Village names captured on plans are as per the villages which exist on the GIS and Census databases.



Plan 1: Ward 06 Locality

2. Methodology

The methodology utilised for the analysis and profiling in this report was derived as follows:

1. Synthesis an interpretation of questionnaires and community feedback;
2. Translated information into a Strength, Weakness, Opportunities and Threats analysis;
3. Conducted a verification process on the populations profiles, social profile and economic profile using Census 2011 data which was conducted at a Ward level;
4. A detailed GIS mapping exercise was completed in order to translate the findings into spatially represented outcomes;
5. Ward needs, and priorities were identified for the wards;
6. Needs identified for the ward were translated into projects and a consolidated implementation plan together within financial implications was completed.

The analysis of Ward 06 also took its '*point of departure*' from the primary data which was available from the data collection and community consultation completed in the previous phase

3. Ward Overview

The section below highlights the specific sections which were analysed in relation to Ward 06. The SWOT analysis,

3.1. SWOT Analysis

The SWOT analysis was developed, through a series of engagement sessions with the local community and traditional leadership of Ward 06, by the municipality.

STRENGTHS	WEAKNESSES
<ul style="list-style-type: none"> Villages are situated closely together Ward is closer to town-services are thus easily accessible The Ward is electrified Agricultural activities Co-operative initiatives 	<ul style="list-style-type: none"> Lack of skills Prevalence of HIV/AIDS High level of unemployment among the youth Poor road access
OPPORTUNITIES	THREATS
<ul style="list-style-type: none"> The ward has resources such as water and sand There a town with a library in close proximity, learners from the ward utilise that resource SMMes 	<ul style="list-style-type: none"> Disasters (tornado, floods) Drought Teenage pregnancy High crime rate School dropouts

Table 1: SWOT Analysis – Community Based Planning Program 2017 (Data Collection)

3.2 Major events within the Ward

The table below highlights the major events which have taken place /happened within Ward 06 over the last couple of years. The biggest occurrence within the ward was a tornado that occurred in 2016, leaving a number of household in Botsola and Mahangwe homeless.

EVENT/ OCCURANCE	YEAR	IMPACT
Tornado that affected houses in Botsola and Mahangwe	2016	People lost their houses and some were left homeless

Table 2: Major Event within the Ward – Community Based Planning Program 2017 (Data Collection)

3.3. Services/ Infrastructure and Programmes Within the Ward Within The 5-Year Period (2012-2016)

Ward 06 has experienced a fair amount of infrastructure investment between the years of 2013 and 2015. It is evident that the benefits of these projects have benefited the ward as well as the municipality as a whole.

Type	Year	Beneficiaries	Status / present condition	Impact
Sanitation	2012-14	7 villages	Not in good condition	People's lives were improved
Electricity infills	2014-15	All villages	Good	More households were electrified
Access road	2013-15	Polokong village	Fair	Community members were able to access their villages
Sindezama Poultry Project	2014	Zwelitsha community members	Not functional	Poultry project was funded by the Department of Social Development

Table 3: Programmes within the Ward – Community Based Planning Program 2017 (Data Collection)

4. Socio Economic Analysis

4.1. Population Profile

The sub sections below provides an analysis of the population profile of Ward 06.

4.1.1. Population Size and Distribution

The total population of Ward 06 is 7398 and 2 677 households.

LIST OF VILLAGES/ LOCATIONS/SUB AREAS	OTHER NAME/S FOR THE VILLAGE/ LOCATIO N	NUMBER OF HOUSEHOLDS			POPULATION SIZE (NUMBER OF PEOPLE)		
		Communit y Feedback	Censu s 2011	Projected Househol d by 2050 growing at 0.3% Per Annum	Communit y Feedback	Censu s 2011	Projected Populatio n by 2050 growing at 0.4% Per Annum
Protea	N/A	154	75	-	656	228	-
Ramatli	N/A	141	-	-	404	-	-
Bhakaneni	Khoapa	440	-	-	1118	-	-
Botsola	N/A	286	-	-	641	-	-
Polokong	Skolong	184	387	-	357	-	-
Taung	Dawini	227	-	-	362	-	-

Mahangwe	N/A	302	-	-	611	-	-
Zwelitsha	N/A	406	66	-	803	714	-
Matsetseng/Nobhaca	N/A	299	-	-	593	-	-
Dengwane	Ndlela-Ndlovu	238	324	-	904	-	-
TOTAL POPULATION -		2677	1962	2165	6449	7398	8406

Table 4: Population Size and Distribution within the Ward – Community Based Planning Program 2017 (Data Collection)



4.1.2. Gender Distribution

The chart below depicts that 52% of the total population of Ward 06 are female. This is typical of most wards within Matatiele. This statistic also speaks to the table below on child headed households.

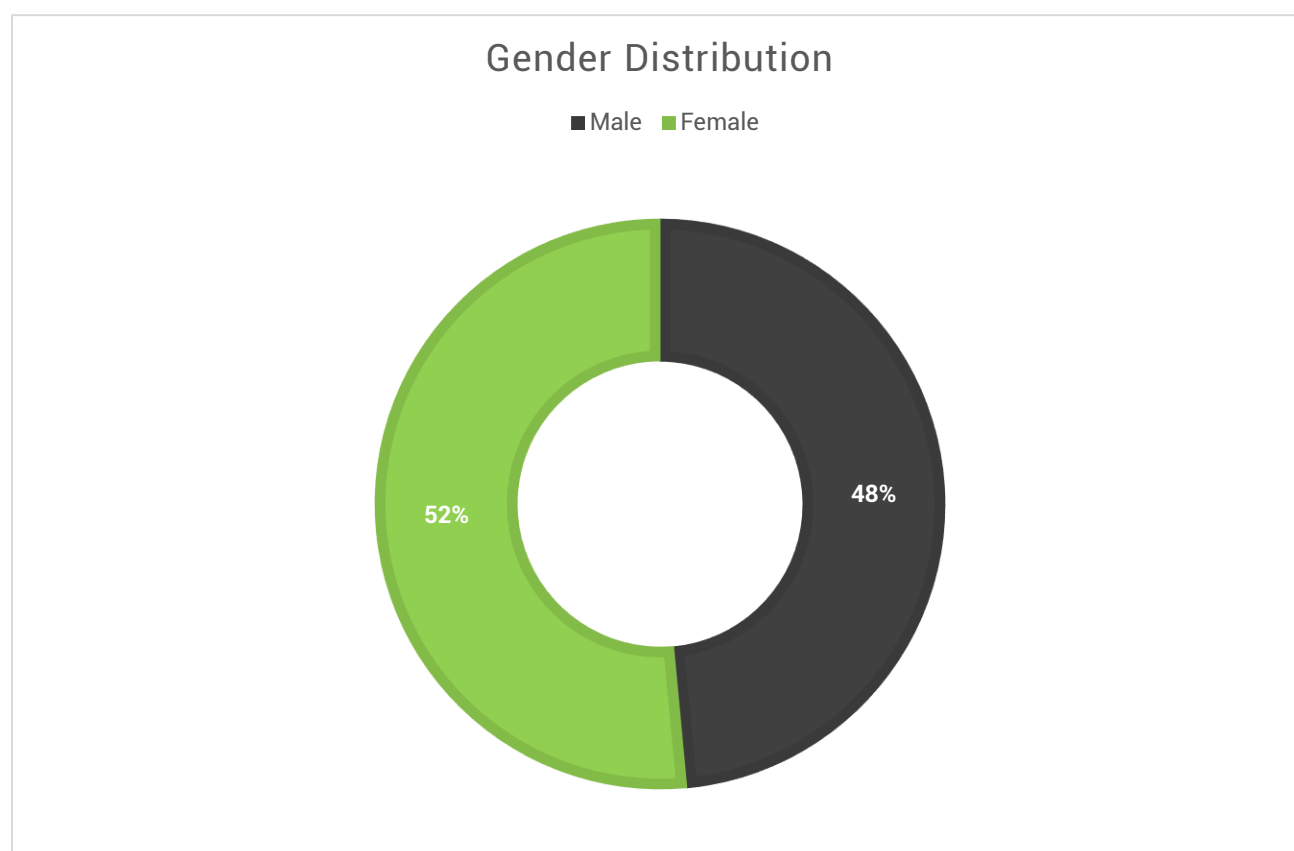


Figure 1: Gender Distribution – Census 2011

4.1.3. Age

The dominant age group in Ward 06 is the classified age group of 00-04yrs. The population of this ward is dominated by younger people (00-19). There is a sharp decline in the number of people per age group from ages 20 years and older.

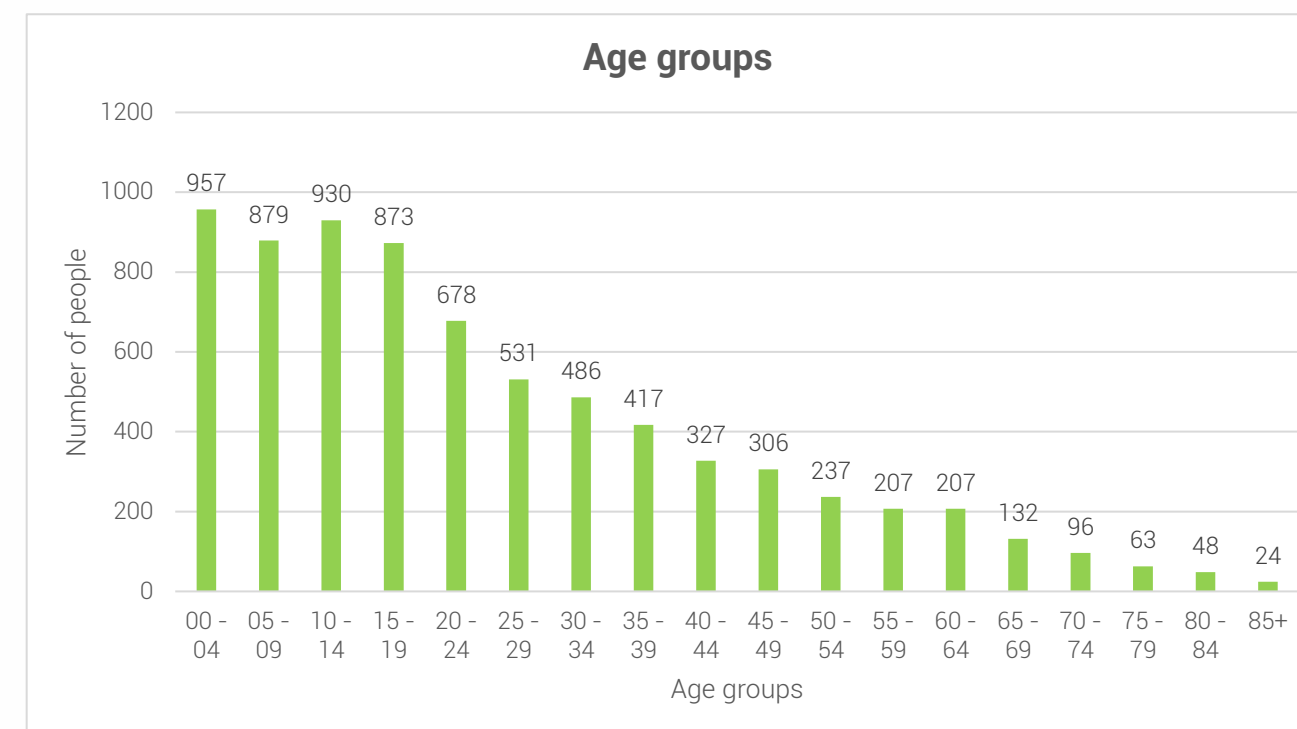


Figure 2: Age within Ward Distribution – Census 2011

4.1.4. Language Distribution

It is evident that the most spoken language in Ward 06 is isiXhosa, followed by Sesotho and English. The language preference correlates to the racial split within Ward 06 and is an indication of the language preference which people appreciate.

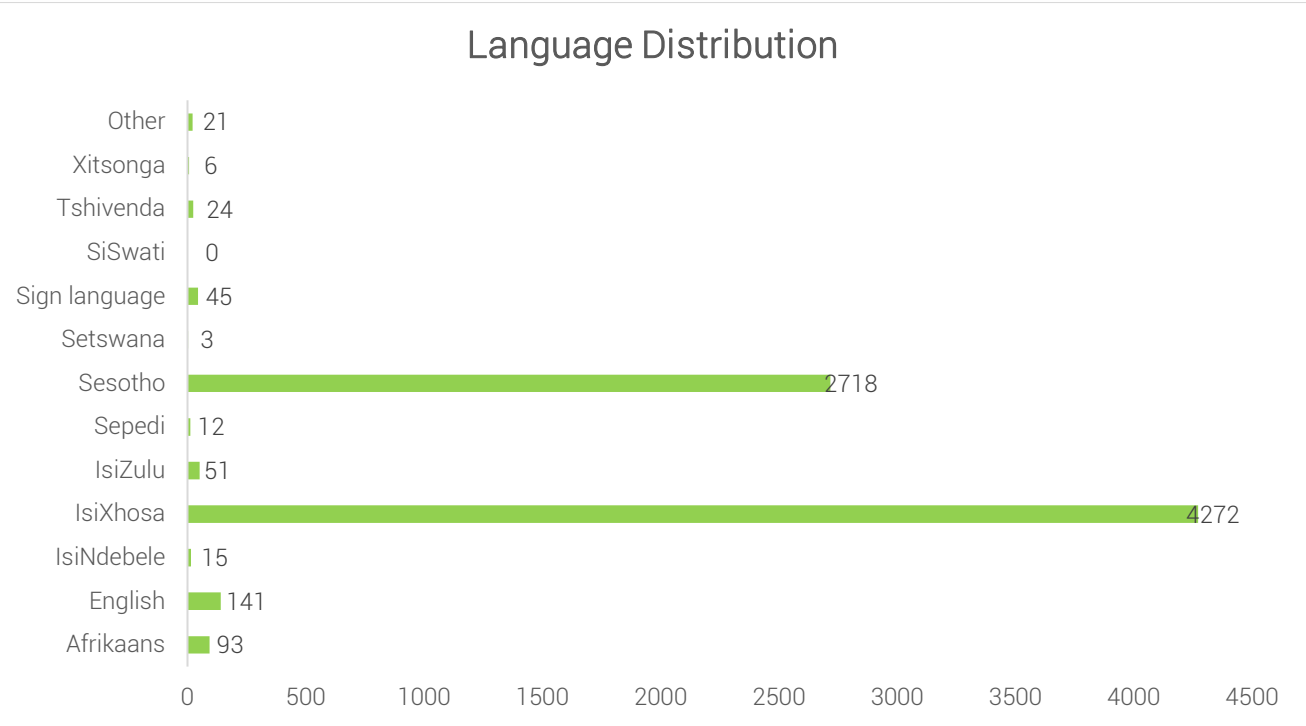


Figure 3: Language Proficiency within Ward – Census 2011

4.1.5. Social Grants

The community survey did not record the social grant, however there are a recipients of social grants within the whole ward.

TYPE OF SOCIAL ASSISTANCE OFFERED	NUMBER OF HOUSEHOLDS
	Community Feedback
Child support grant	-
Old age	-
Disability grant	-
Foster care grant	-
Grant in aid	-
Stress relieve grant	-
Food parcels	-

Table 5: Social Grant Dependency within Ward - Community Based Planning Program 2017 (Data Collection)

4.1.6. Indigent Support

A rural municipality with a high dependency rate on social assistance; MLM has a large number of indigent households. Particularly for this ward 06. Although the number is high, it is only a few households that receive indigent supports from the municipality. The challenges that affect to the provision of such support, include beneficiaries with no properly documents, challenges with verification of beneficiaries amongst other issues.

TYPE OF INDIGENT HOUSEHOLDS	HOUSEHOLDS RECEIVING SERVICES	TOTAL BACKLOG
-	-	-

Table 6: Indigent support within ward– Community Based Planning Program 2017 (Data Collection)

4.2. Household Profile

The section below details of households within Ward 06 in terms of their size, gender of heads of households and distribution.

4.2.1. Average Household Size

The average household size within Ward 06 is four (4) persons per household.

4.2.2. Heads of Households

Based on the table below show records of child headed households and female headed households

Villages	Child-Headed households		Female-Headed Households	
	Community Feedback	Census 2011	Community Feedback	Census 2011
Protea	-	-	-	42
Rammatli	-		-	-
Bhakaneni/Khoapa	-		-	267
Botsola	-		-	-
Polokong	-	12	-	210
Taung	-		-	-
Mahangwe	-		-	-
Zwelitsha	-	-	-	39
Matsetseng/Nobhaca	-		-	-
Dengwane	-	3	-	138
TOTAL	-	15	-	891

Table 7: Child and Female Headed Households within the Ward - Census 2011

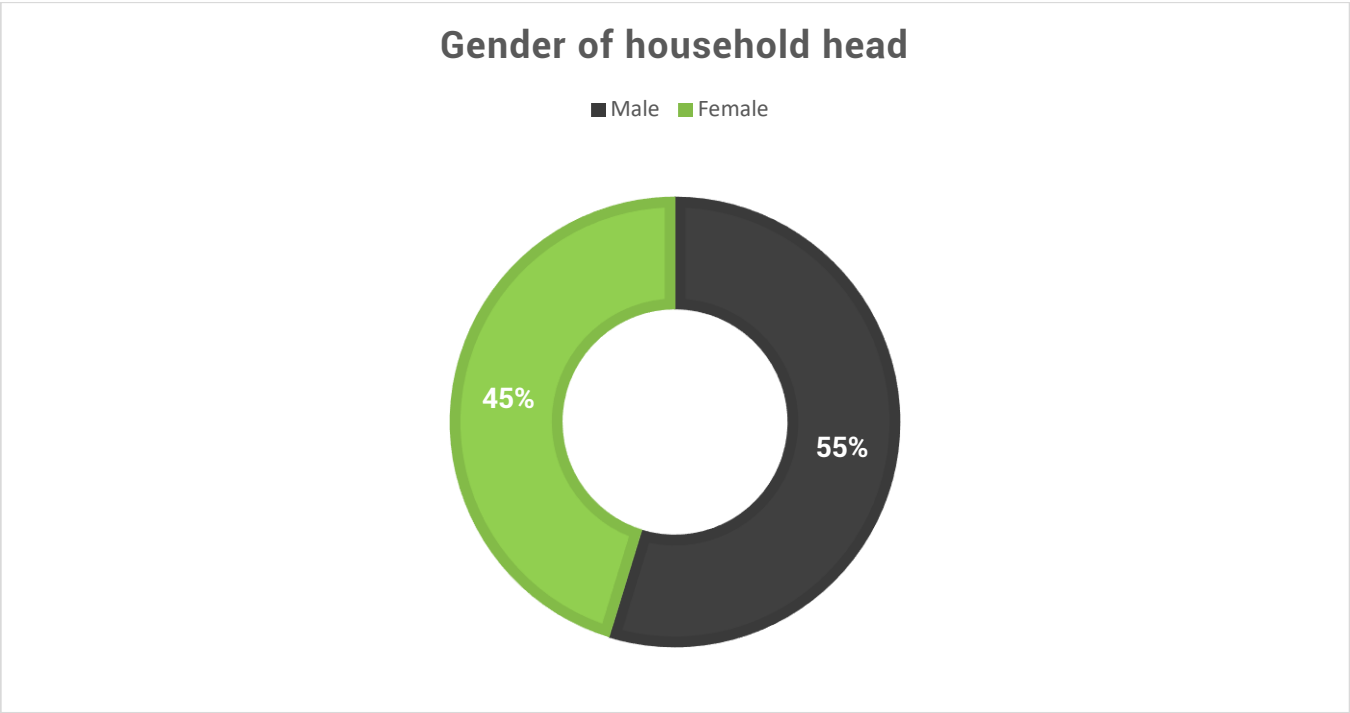


Figure 4: Gender of Household Head - Census 2011

4.2.3. Household Dwelling types

The majority of people in Ward 06 live in traditional dwellings/ hut and brick/ concrete constructed houses.

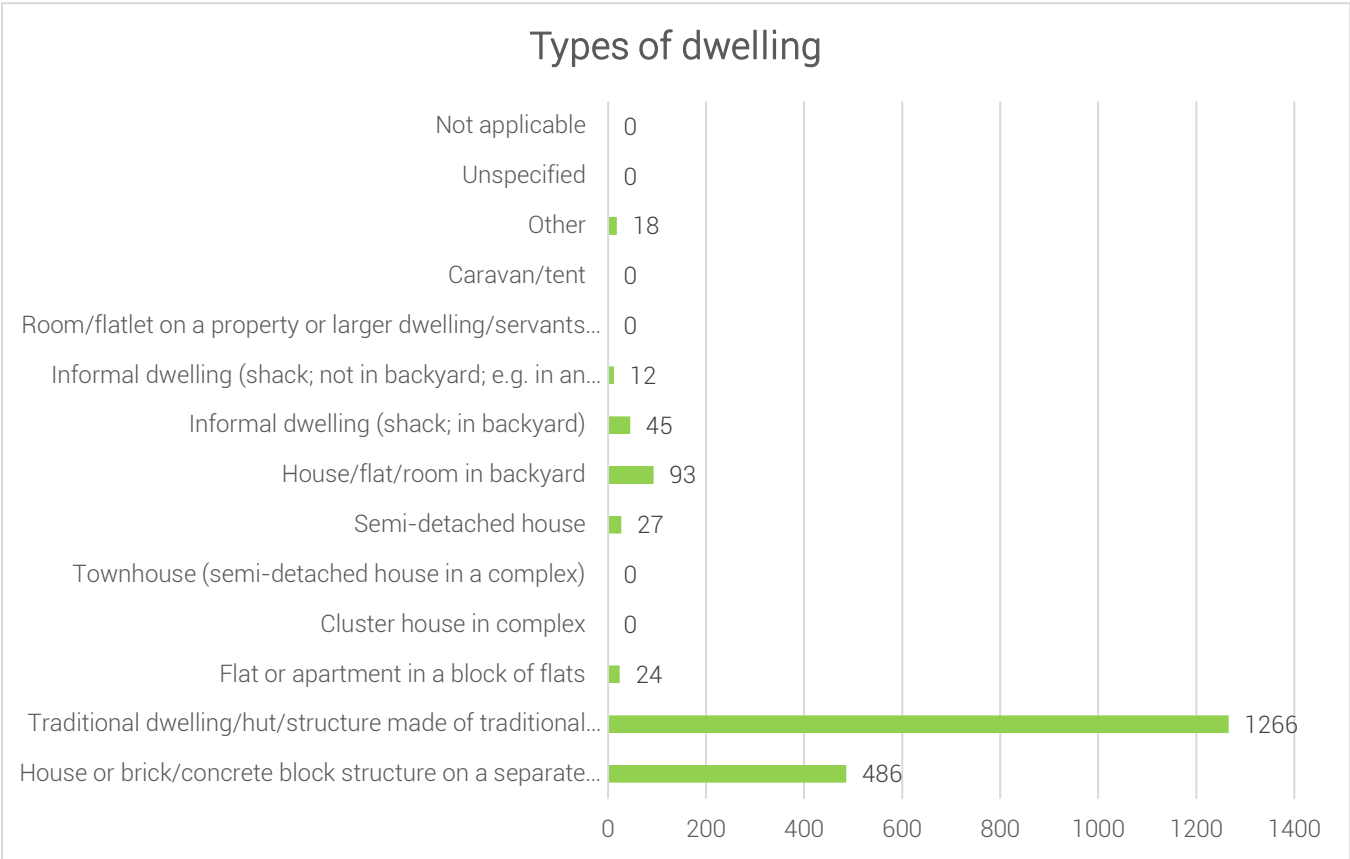


Figure 5: Types of Dwelling within Ward – Census 2011

4.3. Social Profile

4.3.1. Education Facilities: Community Feedback

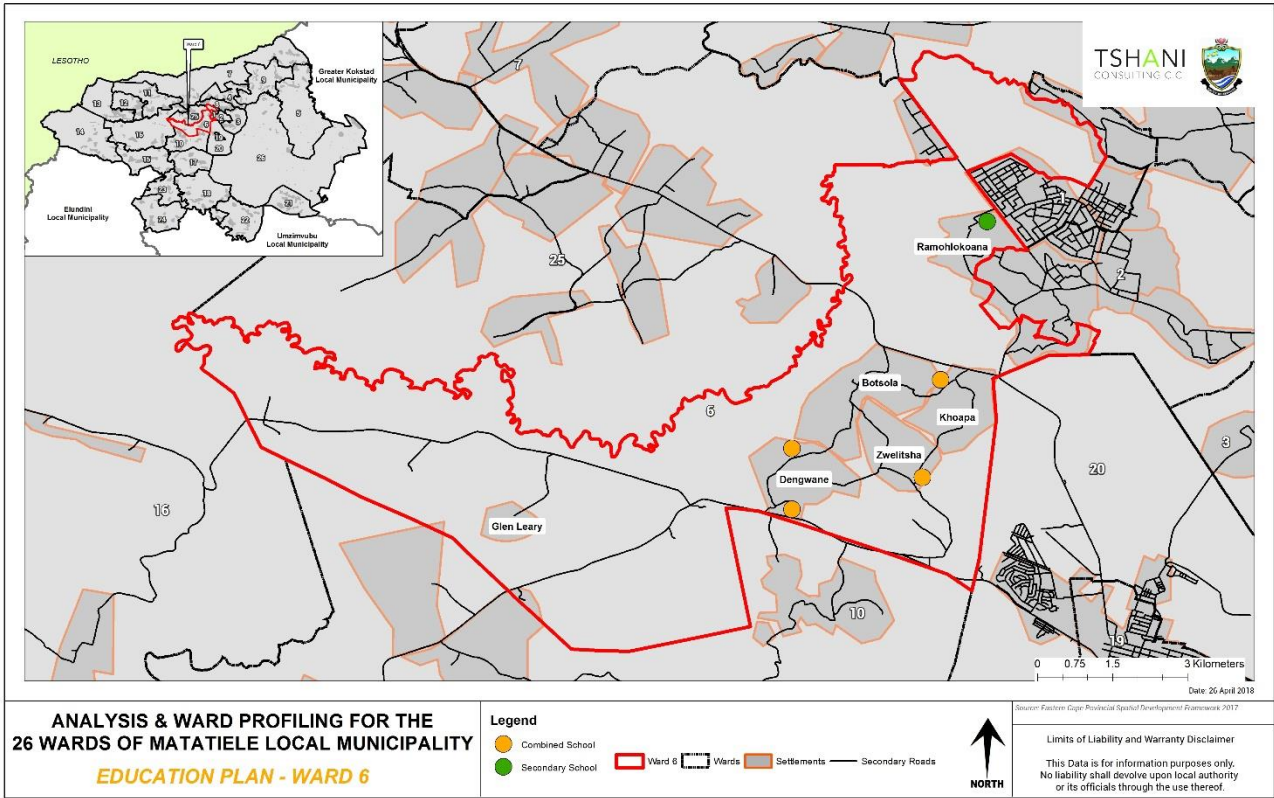
The range of schools identified in the table below was developed form the community feedback sessions.

NAME	TYPE	AREA LOCATED	NUMBER OF LEARNERS
Maluti SS	Senior Secondary School	Protea	898
Boiteko	Pre-school	Bhakaneni	46
Polokong JSS	primary	Polokong	-
Rethabile	Pre-school	Taung	26
Hlomendlini JSS	Primary	Zwelitsha	489
Caiphus Khoapa	Primary	Matsetseng	191
Manguzela	Full service	Dengwane	965
Dengwane	Pre-school	Dengwane	-

Table 8: Education Facilities within Ward - Community Based Planning Program 2017 (Data Collection)

4.3.2. Education Facilities

Ward 06 comprises of Senior Secondary school and Primary schools.



Plan 2: Education Facilities

4.3.3. Churches and Religious Organisations: Community Feedback

The range of religious facilities identified in the table below was developed form the community feedback sessions. These facilities are well spread out across the Ward to assist with social upliftment. Some of the churches do not have the structures, as they operate within the households.

NA ME	LOCATION/AREA	NUMBER
Methodist church	Polokong, Mahangwe, Bhakaneni	3
Anglican church	Protea, Bhakaneni	2
Zion Catholic church	Taung	2
Zion church	Mahangwe	2
Roman Catholic church	Matsetseng, Taung	2
St Johns church	Dengwane, Matsetseng, Bhakaneni	3
Presbyterian church	Zwelitsha, Mahangwe	2

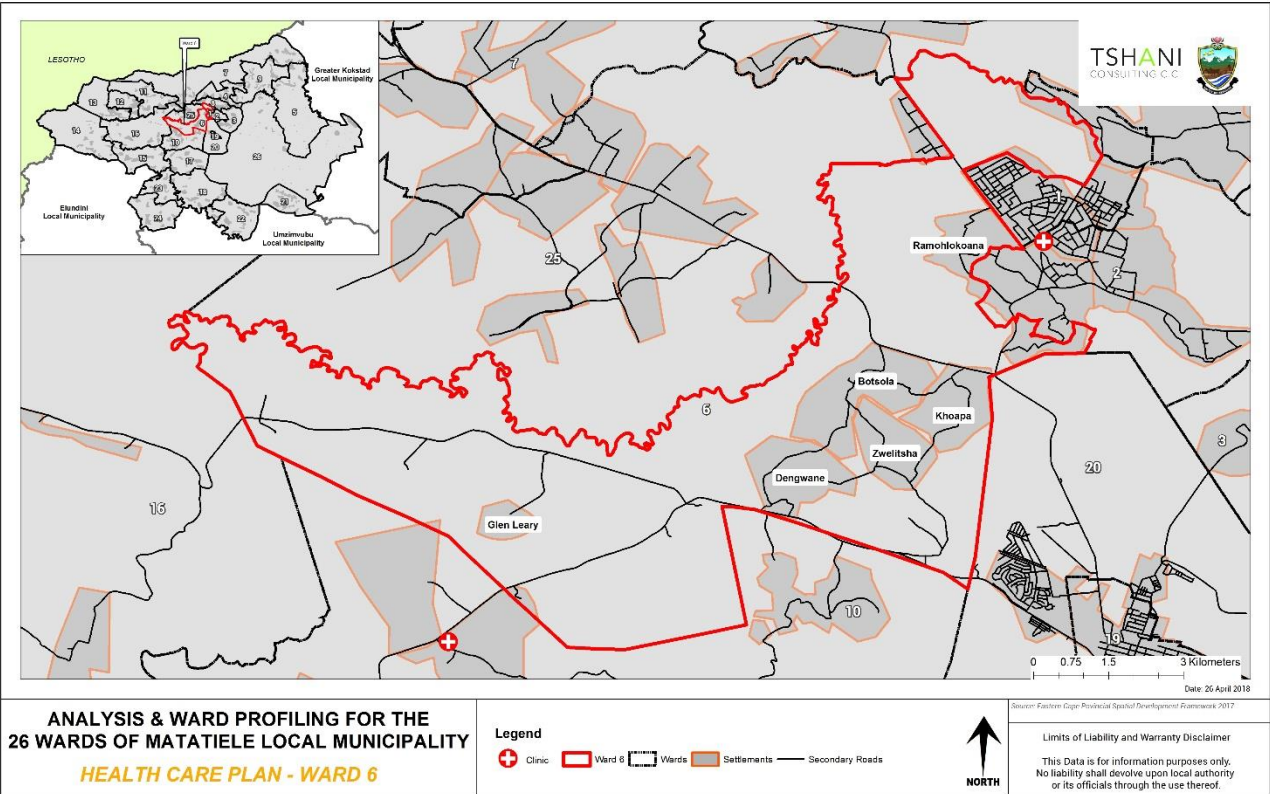
Table 9:Churches and Religious Organisations within the Ward - Community Based Planning Program 2017 (Data Collection)

4.3.4. Health Care Facilities: Community Feedback

The community feedback identified no health facilities within the ward. The closest health facility is located in the neighbouring which is ward01 and ward 19.

4.3.5. Health Care Facilities

There is no Health Care Facility within ward 06. Health facilities are located in neighbouring wards, the closest being located in ward 01.



Plan 3: Health Care Facilities

4.3.6. Community Hall: Community Feedback

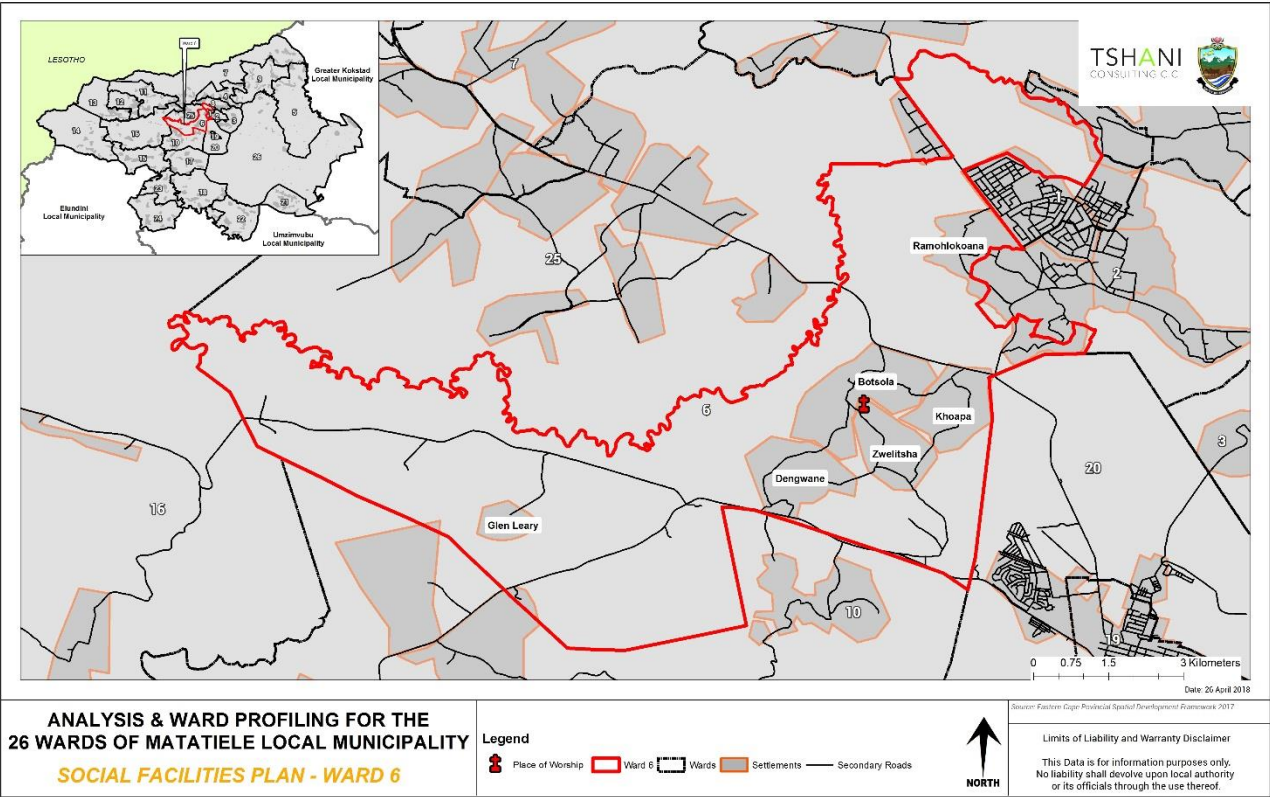
There is a single community centre identified within the ward, as note from the community surveys.

Name and type	Area located
Multi-purpose Centre	Dengwane

Table 10: Community Halls - Community Based Planning Program 2017 (Data Collection)

4.3.7. Other Social Facilities

The map below spatially identifies places of worship.



Plan 4: Other Social Facilities

4.4. Economic Profile

4.4.1. Individual Monthly Income: Census 2011

Over half of the population of Ward 06 receives less than R800 or no income monthly while more than 3000 people have no income at all.

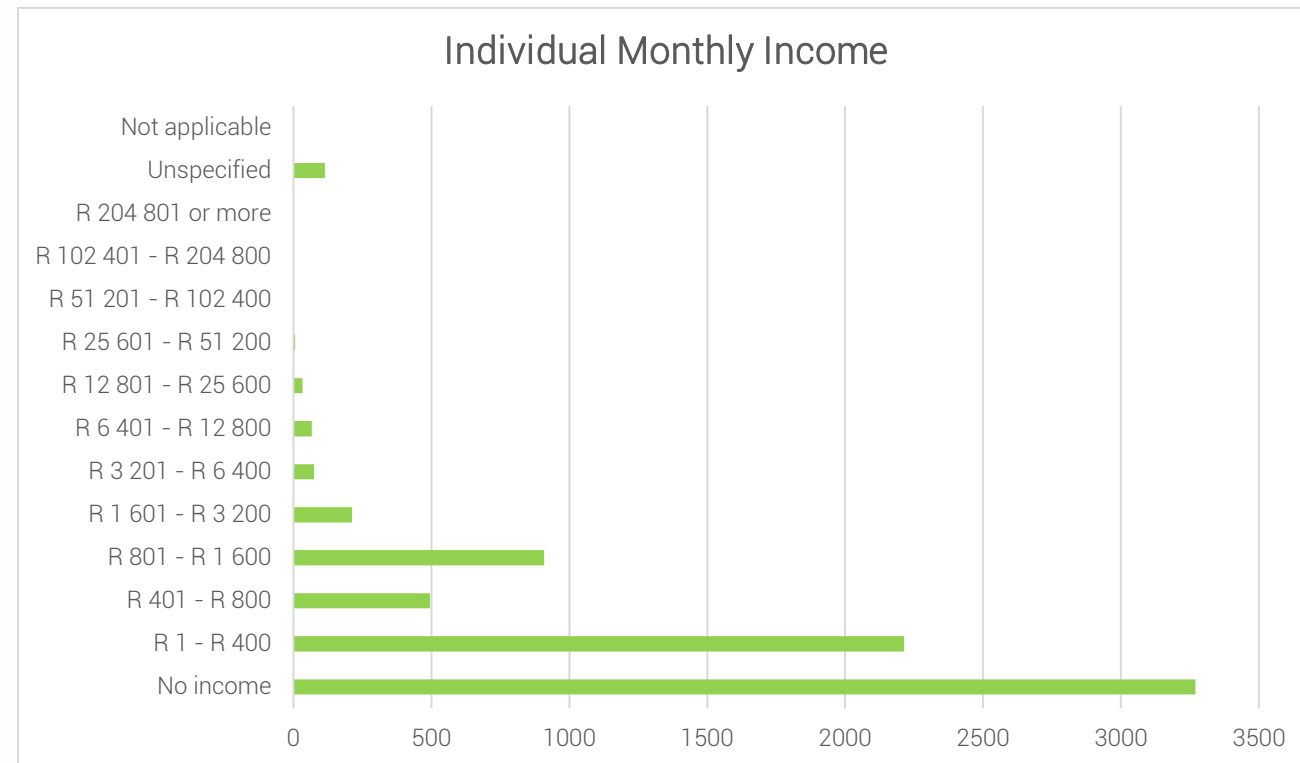


Figure 6: Individual Monthly Income - Census 2011

4.4.2. Economic Activities: Community Feedback

It is noted that shops retailing in alcoholic beverages are the most prominent in Ward 06, followed by shops and Spaza shops. There are four (4) Spaza shops as well as four (4) shops recorded in Ward 06.

RETAIL(INDICATE SHOPS, SPAZA SHOPS, CAFÉ, TARVENS, SALONS, ETC)	
TYPE	LOCATION
Spaza shop	Protea, Taung, Mahangwe, Dengwane
Tavern	Botsola, Dengwane, Matsetseng, Mahangwe, Bhakaneni
Shops	Matsetseng, Zwelitsha, Polokong, Botsola

Table 11: Economic Activity - Community Based Planning Program 2017 (Data Collection)

4.4.3. Tourism Activities

There are no tourism facilities present within the ward, this indicates that there is room for growing a broader tourism base within Ward 06.

4.4.4. Agricultural Activities

The community of Ward 06 indicated various agricultural practises on the Community survey conducted by the MLM. Agricultural activities such as fruits, vegetables and grains within the ward should be evaluated for creating a market to sell beyond the ward. These present opportunities for business and income generation within the ward.

TYPE OF PRODUCTS	FOR HOUSEHOLD CONSUMPTION	FOR SELLING TO THE COMMUNITY
Cattle	Yes	No
Sheep	Yes	No
Goats	Yes	No
Horses	Yes	No
Poultry	Yes	No
Vegetables	Yes	Yes
Fruits	Yes	Yes
Grains	Yes	Yes

Table 12: Agricultural Activities – Community Based Planning Program 2017 (Data Collection)

4.4.5. Products Produced in Wards

The table below indicates that there is production of vegetables, crafts and grain production for selling within the ward. Such individuals responsible for these activities should be better supported and encouraged to expand.

TYPE OF PRODUCTS	AREAS / VILLAGES	FOR HOUSEHOLD CONSUMPTION	FOR SELLING TO THE COMMUNITY
Sewing	All villages in ward	Yes	Yes
Crafts	Taung	Yes	Yes
Vegetable	All villages in ward	Yes	Yes
Grain	Botsola	Yes	Yes

Table 13: Products produced within the Ward

4.4.6. Existing Skills

The ward constitutes of some diverse skills which is a major asset for the ward. Such individuals need to be further trained and opportunities to mentor other unemployed individuals within the community should be encouraged. The entrepreneurs within ward should also be given better access to market opportunities. There is a broad range of professionally qualified individuals who are also major assets for Ward 06.

TYPE OF SKILLS	EXISTING (INDICATE WITH YES/NO)	TYPE OF SKILLS	EXISTING (INDICATE WITH YES/NO)
Carpenters	Yes	pottery	Yes
Plumbing	Yes	teachers	Yes
Builders	Yes	Police	Yes
Artists	Yes	Health officials	Yes
Gardening	Yes	Accountants	Yes
Cooking	Yes	Engineers	Yes
Sewing	Yes	Lawyers	Yes
Writing	Yes	Other (indicate)	
Drivers	Yes		
Farmers	Yes		

Table 14: Existing Skills within the Ward: Community Based Planning Program 2017 (Data Collection)

5. Built Environment Assessment

5.1. Household Access to Waste Removal

The Municipality does not provide the waste collection removal in this ward, hence ward 06 people dispose their own waste

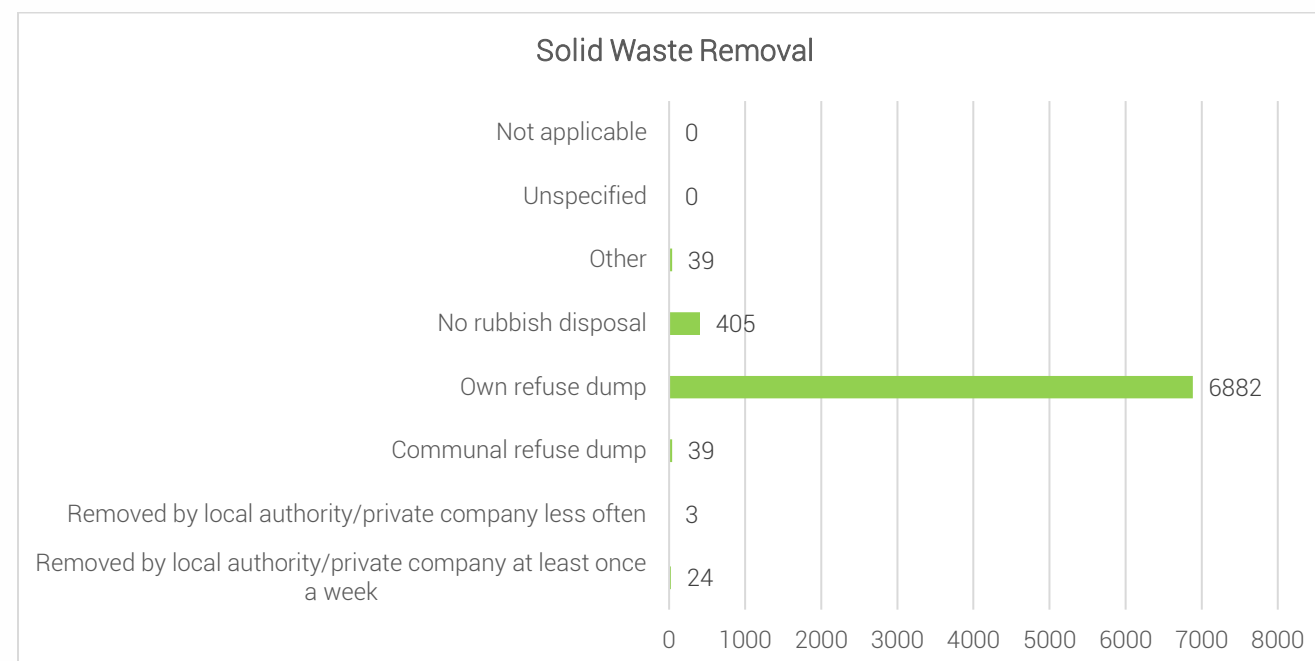


Figure 7: Access to Solid Waste Removal - Census 2011

5.2 Household Access to Water

The main supplier of water is the District Municipality (ANDM) which currently provides water to Matatiele area. Within the whole ward has access to water but there is still a large backlog with regards the provision of water as much as Polokong, Bostola and Taung have community taps but there is no water coming out.

VILLAGE/LOCATION	COMMUNITY TAPS	WATER-INSIDE YARD	WATER-INSIDE HOUSE	BOREHOLES	DRAW WATER FROM STREAMS, DAMS, RIVER
Protea	09				
Rammatli	06				
Bhakaneni	11				
Botsola	07				
Polokong	04				
Taung	04				
Mahangwe	10				
Zwelitsha	15				
Matsetseng/Nobhaca	09				
Dengwane	12				

Table 15: Household Access to Water: Community Based Planning Program 2017 (Data Collection)

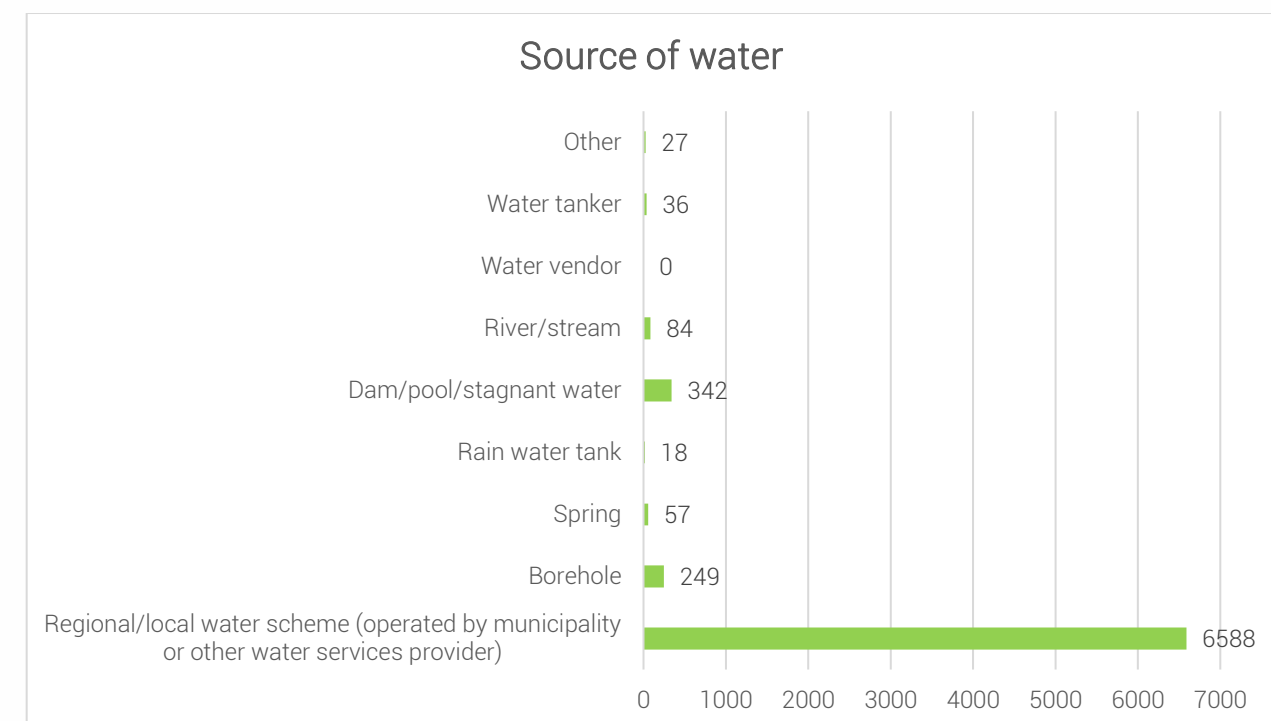


Figure 8 Source of Water supply within the Ward - Community Based Planning Program 2017 (Data Collection)

5.3 Household Access to Sanitation

District Municipality (ANDM) currently provides sanitation to the Matatiele area. As per Community Based Planning Program (Data Collection) 7 villages have access to ventilated pit toilets within the whole ward. This shows there is still a large number of backlog with regards to the provision of sanitation as 3 villages have no access to ventilated pit toilets within this ward.

VILLAGE/LOCATION	VENTILATED PIT TOILETS	FLUSH TOILETS	Other
Protea	150		
Rammatti	141		
Bhakaneni	418		
Botsola	Nil		
Polokong	Nil		
Taung	Nil		
Mahangwe	282		
Zwelitsha	381		
Matsetseng/Nobhaca	281		
Dengwane	208		

Table 16: Household Access to Sanitation: Community Based Planning Program 2017 (Data Collection)

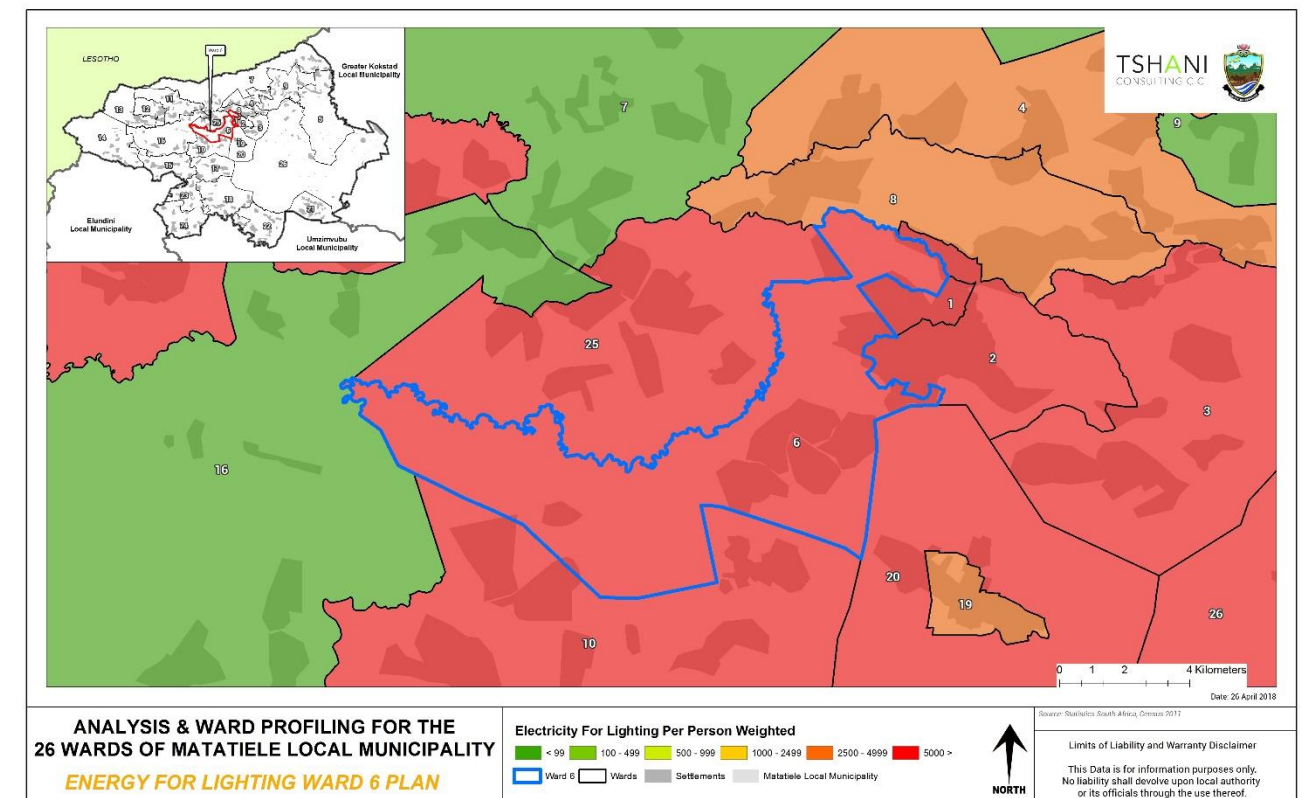
5.4 Main source of Energy with the Ward: Community Feedback

The main source of energy within ward 06 is electricity. This indicates that the level of service within the ward is relatively high, with only a few electricity infills within each village of the ward.

VILLAGES/LOCATION	ELECTRICITY	SOLAR	NO ELECTRICITY/SOLAR
Protea	150		4 need electricity infills
Rammatti	133		13 need electricity infills
Bhakaneni	436		4 need electricity infills
Botsola	278		10 need electricity infills
Polokong	136		12 need electricity infills
Taung	222		7 need electricity infills
Mahangwe	284		16 need electricity infills
Zwelitsha	381		15 need electricity infills
Matsetseng/Nobhaca	263		15 need electricity infills

Dengwane	208		30 need electricity infills
----------	-----	--	-----------------------------

Table 17: Main source of Energy- Community Based Planning Program 2017 (Data Collection)



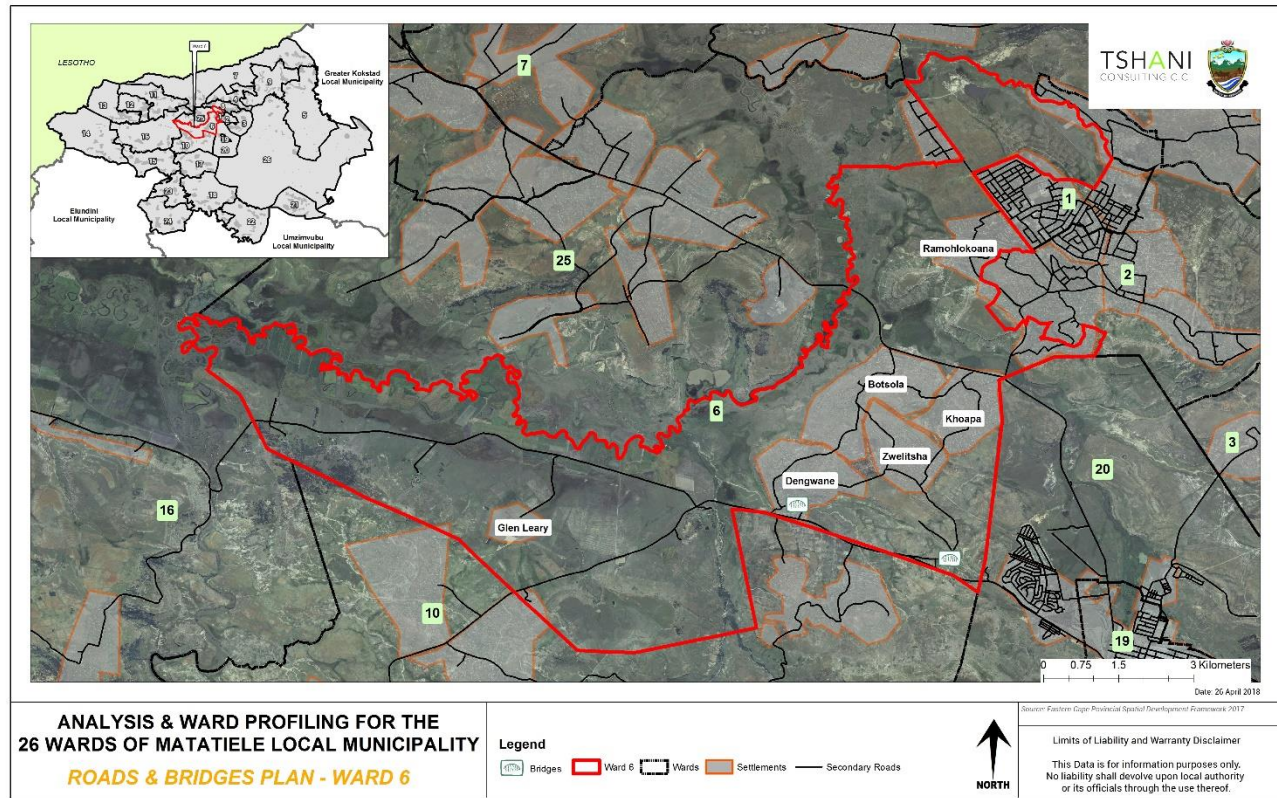
Plan 5: Households with electricity

5.5 Roads and Bridges

There are existing access roads between villages within the ward although they are stated to be in bad condition. The plan below picks up on the extent of road networks which are present within the ward.

NAME AND TYPE	AREAS COVERED	CONDITION OF THE ROADS
Access road	Khoapa & Zwelitsha	In a bad condition
Access road	Botsola, Taung to Dengwane	In a bad condition
Access road	Polokong to Taung	In a bad condition
Access road	Rammatti	In a bad condition
Access road	Protea	In a bad condition

Table 18: Roads and Bridges within the Ward



Plan 6: Roads and Bridges within the Ward - MLM GIS

6. Current Projects

The following table highlighted the key projects which have been identified by the community. The projects are mainly linked to education. *Further projects need to be targeted towards building a local economic base and spatial resilience.*

No	PROJECT/PROGRAMME NAME	STATUS	WHO IS RESPONSIBLE
	Matatiele Bulk water supply	In progress	Alfred Nzo District Municipality
	Construction of Maluti High School	On process	Department of Education & Department of Public Works
	Restructuring of Manguzela JSS	On process	Department of Education & Department of Public Works
	Botsola to Taung access road	On process	Matatiele Local Municipality
	Malubaluba RDP project (Protea)	On process	Department of Human Settlements

Table 19: Current Projects – Community Based Planning Program 2017 (Data Collection)

7. Ward Needs and Priorities

The need and priorities which have been identified need to be prioritised in the municipal SDF and other local plans created. The projects range from short to long term projects and have been further broken down in the implementation plan. The ward priority also identifies the locations of priority provincial projects which are located with ward 06.

VILLAGE/LOCATION/ SUB AREA	NEEDS IDENTIFIED
Dengwane	Bridge Maintenance, Sports Field, Furniture for Hospice, Access Road maintenance, Water taps maintenance, Completion of Manguzela High School, RDP Houses, Police Protection, Fencing of Pre-School
Matsetseng	Grave Yard Fencing, Access Road Maintenance, Water, RDP Houses, Community Hall, Clinic, Park, Community Centre Facility
Zwelitsha	RDP Houses, Access Road Maintenance, Seeds, Community Hall, Sports Ground, Clinic, Old Age Home
Mahangwe	RDP Houses, water, access road maintenance
Polokong	Water and sanitation, access road maintenance, RDP houses, Clinic, RDP Houses
Taung	Water and sanitation, access road maintenance, RDP Houses
Botsola	Water and sanitation, RDP Houses, welding project funding, access road maintenance
Bhakaneni	Fencing of grave yard, Donga rehabilitation, access roads maintenance, RDP houses
Ramatli	Tarred road Rammatli, sanitation, preschool, sanitation, bridge
Protea	Access road, sports ground, fencing of grave yard

Table 20: Ward Needs – Community Based Planning Program 2017 (Data Collection)

WARD 06	
INFRASTRUCTURE PRIORITIES	SOCIO- ECONOMIC PRIORITIES
1. Water and sanitation	
2. RDP Houses	
3. High school	
4. Mobile Clinic	
5. Access road re-gravelling	

Table 21: Ward Priorities – Community Based Planning Program 2017 (Data Collection)

8. Stakeholders within Ward

The table below highlights the stakeholders which were engaged with during the Community engagement sessions.

NAME OF STAKEHOLDER	CONTACT PERSON AND TEL
NGOs	Nyameka ngxongo
Elderly forum	Mrs Tlali 0797033527
Youth forum	Miss Matshidiso 0781985273
Transport Forum	Mr Morebane
Traditional leaders	Mr VV Mbangwa
Traditional healers	Mrs N Nkomo
Disability forum	Mr Z Mhlonyane
Ward committee	Mrs N. Khalala

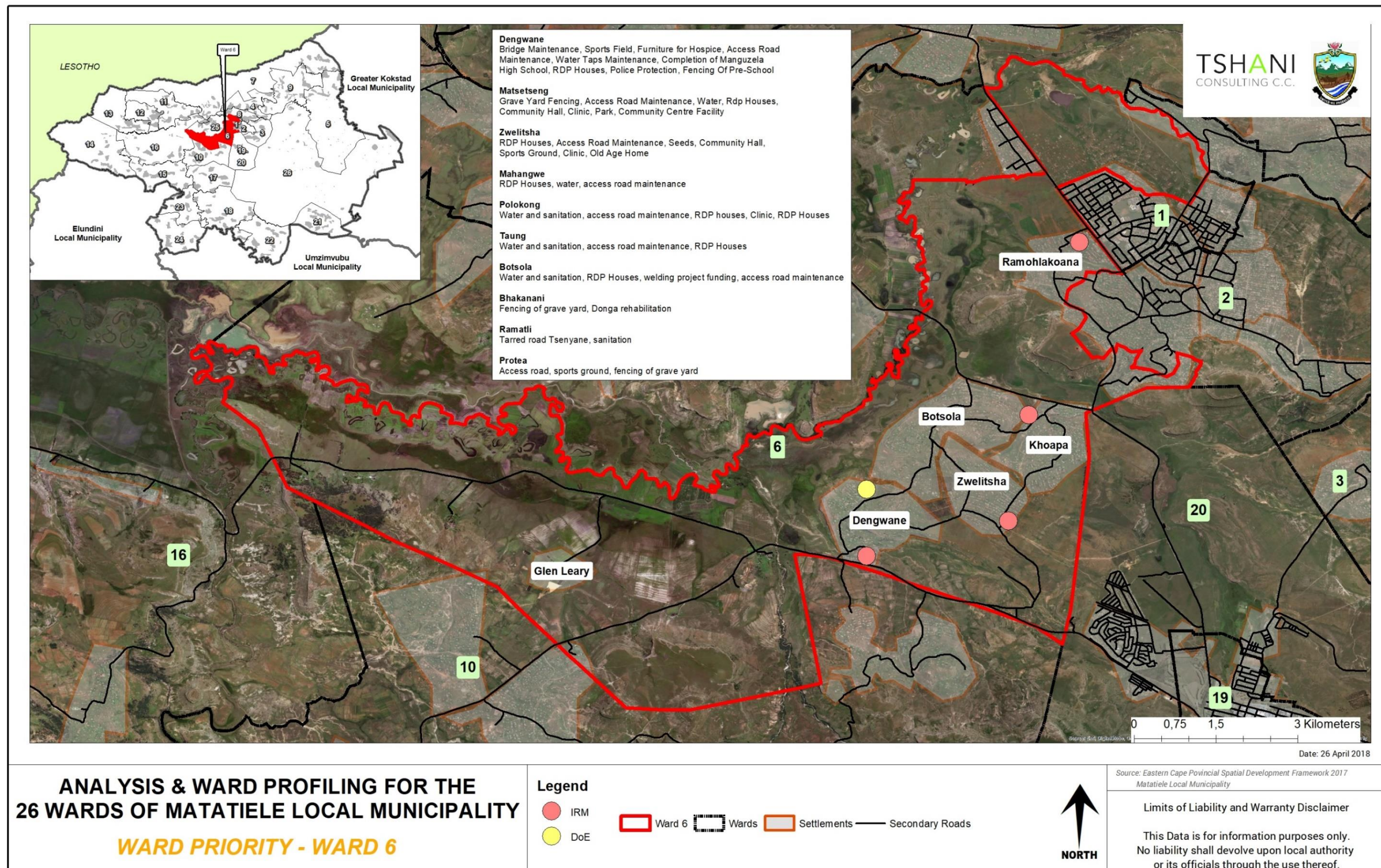
Table 22: Stakeholders engaged during community engagement sessions – Community Based Planning Program 2017 (Data Collection)

9. Key Social Challenges

The community survey that was conducted by the MLM identified crime, stock theft, lack of high schools, drug abuse, early child initiation and immigrants without proper documentation.

CHALLENGE IDENTIFIED	AFFECTED AREAS	IMPACT
Crime (Rape, housebreaking)	All villages	No peace
Stock theft	Whole ward	Bad – the municipality and SAPS are not assisting with this issue
Immigrants without proper documentation.	Khoapa	Learners at School with no Documents
No High School	In Nine Villages	Children drop out early at School
Drug Abuse	All Villages	Children drop out early at school
Early Child Initiation	All Villages	Quarrelling amongst learners at School and early dropouts at school.

Table 23: Key Social Challenges – Community Based Planning Program 2017 (Data Collection)



Plan 7: Ward Priorities